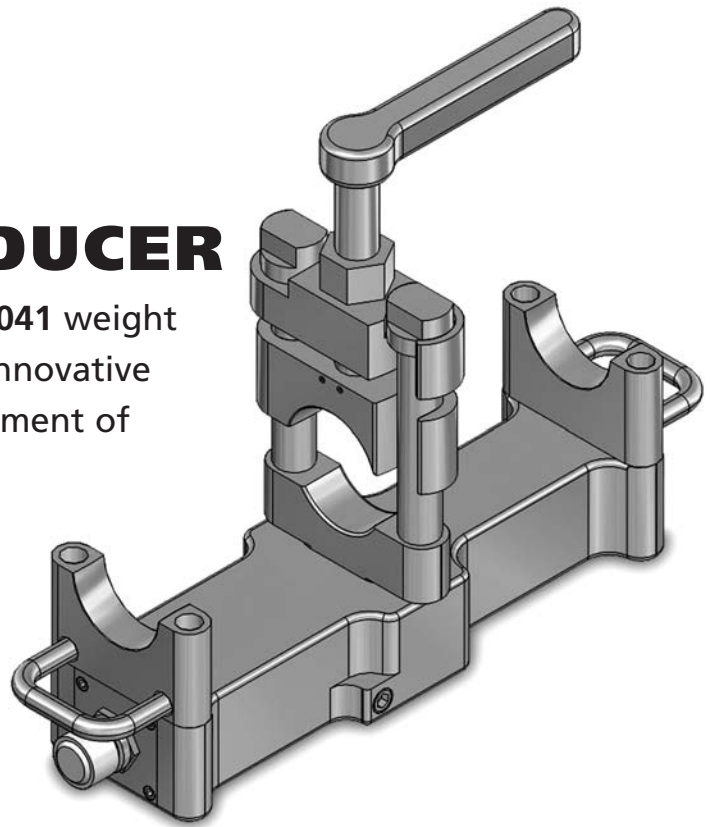


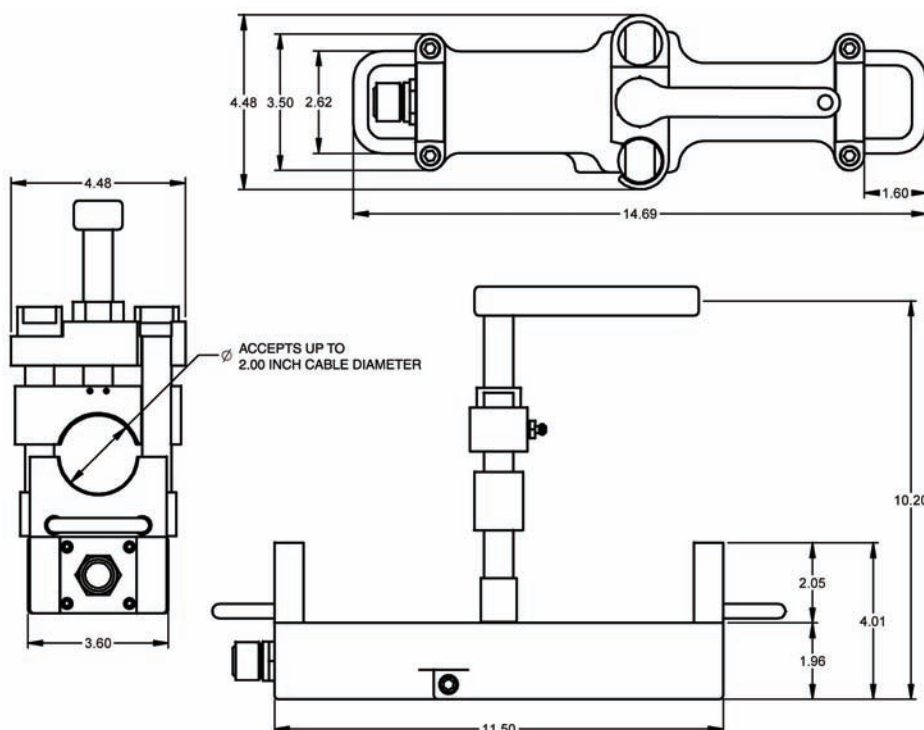
HOOKLOAD TRANSDUCER

Reduce downtime! The all stainless steel **HLT-041** weight sensor is the most robust in the oil field. It's innovative design allows for quick and easy field replacement of the sensing element.

Currently in use by major oil services companies.



- 4-20 mA standard output transducer
- Stainless steel housing
- Customer specified connector (*Amphenol™, Brad Harrison™, Turck™, etc.*)
- Field replaceable load sensing electronics package using standard tools
- Light weight design for safe lifting and installation (*approximately 25 lbs*)



MECHANICAL

Material: Stainless steel housing
 Weight: 25 lb typical
 Length: Approximately 14"
 Maintenance: Field replaceable electronics
 Connector: Customer specified (Glenair™, Amphenol™, Turck™ etc.)
 Weight Range: 0-100,000 lb
 Overload: 2X rated load or 200,000 lb whichever is less

ELECTRONIC CERTIFICATIONS

ATEX Code: EEx ia IIC T5
 Intrinsically safe certified by load sensor manufacturer
 Locations: ATEX Zone 1 when used with an approved safety barrier for an ambient temperature range of -40° to 93°C
 CSA and FM approvals to Class 1 Div 2.

ELECTRICAL

Supply Voltage: 10-28VDC
 Current Requirement/Output: 4-20 mA
 Output: 2 wire current loop
 Zero Offset: < ± 3% of FS
 Span: < ± 3% of FS
 Accuracy: ±5% FS combined
 Temperature Stability: ±.003% of FS /°C, Typical

ENVIRONMENTAL

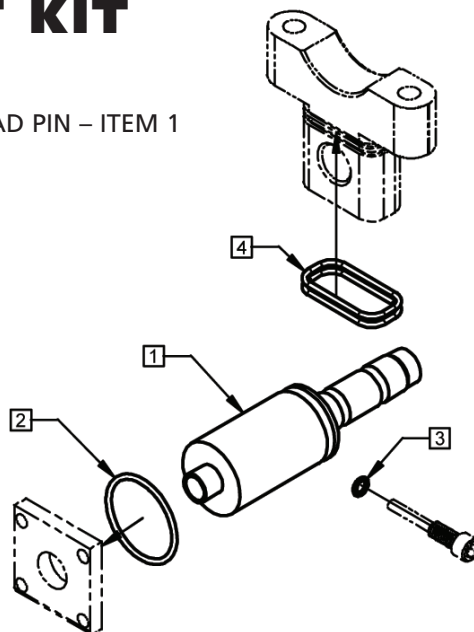
Operating Temperature: -40° to +93°C
 Storage Temperature: -40° to +93°C
 Shock: 100 g's @ 11 msec duration 1/2 sine
 Vibration: 20 to 2500 Hz @ 20 g's peak
 Humidity: 100%, non-submersible

Patent Pending

LOAD PIN REPLACEMENT KIT HOOKLOAD TRANSDUCER

REPLACE ALL O-RINGS AS SHOWN WHENEVER REPLACING LOAD PIN – ITEM 1

| ITEM | PART NUMBER | REV | DESCRIPTION | QTY |
|------|-------------|-----|--------------------------|-----|
| 1 | 100-200-01 | – | SENSOR, LOAD PIN, 100K | 1 |
| 2 | 100-203-130 | – | O-RING - SIZE 130 BUNA-N | 1 |
| 3 | 100-203-010 | – | O-RING - SIZE 010 BUNA-N | 1 |
| 4 | 100-203-127 | – | O-RING - SIZE 127 BUNA-N | 2 |



OUTPUT CURVE VS. LOAD

